

CLIENT ACCEPTANCE

REVISION	PHASE	DATE	INITIALS

APPROVAL STATUS

REVISION	APPROVAL AGENCY	DATE	INITIALS

ALL INFORMATION CONTAINED IN OR DISCLOSED BY THIS DOCUMENT IS CONFIDENTIAL AND PROPRIETARY, AND IS THE EXCLUSIVE INTELLECTUAL PROPERTY OF ROBERT ALLAN LTD. THIS DESIGN INFORMATION IS RESERVED FOR THE EXCLUSIVE USE OF THE CLIENT IDENTIFIED HEREON. ALL FURTHER DESIGN, USE, AND SALES RIGHTS ATTACHED THERETO ARE EXCLUSIVELY RESERVED BY ROBERT ALLAN LTD., AND ANY REPRODUCTION, COMMUNICATION OR DISTRIBUTION OF THIS INFORMATION IS PROHIBITED WITHOUT THE PRIOR WRITTEN CONSENT OF ROBERT ALLAN LTD. ABSOLUTELY NO MODIFICATIONS OR ALTERATIONS TO THIS DOCUMENT MAY BE MADE BY ANY PERSONS OR PARTY WITHOUT THE PRIOR WRITTEN CONSENT OF ROBERT ALLAN LTD.

**CONTRACT DESIGN**  
**ADJUST TO SUIT FINAL LOFTING AND CERTIFIED**  
**VENDOR INFORMATION BEFORE CONSTRUCTION.**



**ROBERT ALLAN LTD.**

NAVAL ARCHITECTS AND MARINE ENGINEERS  
 230-1639 West 2nd Avenue web www.ral.ca  
 Vancouver, B.C. V6J 1H3 email info@ral.ca  
 Canada phone 604-736-9466

VESSEL **Ramparts 2500W**  
**HULL No.: Eregli 49 & 50**

CLIENT **MED MARINE PILOTAGE &**  
**TOWAGE SERVICES**

TITLE **GENERAL ARRANGEMENT**

1	FROM MED30000R8 GENERAL ARRANGEMENT, CCO TO UPGRADE TO CP DRIVE AND FI-FI 1	JUL. 17/15	PGB	HPR	HPR	DRAWN BY PGB	ENG. ###	DATE JUL. 10/15	PLOT SIZE ANSI B	SHEET 1 OF 5	
REV.	REVISIONS	DATE	DWN	CHK	APP.	PROJECT No. 214-042A	DRAWING No. 30000	REV. 1			

**GENERAL PARTICULARS:**

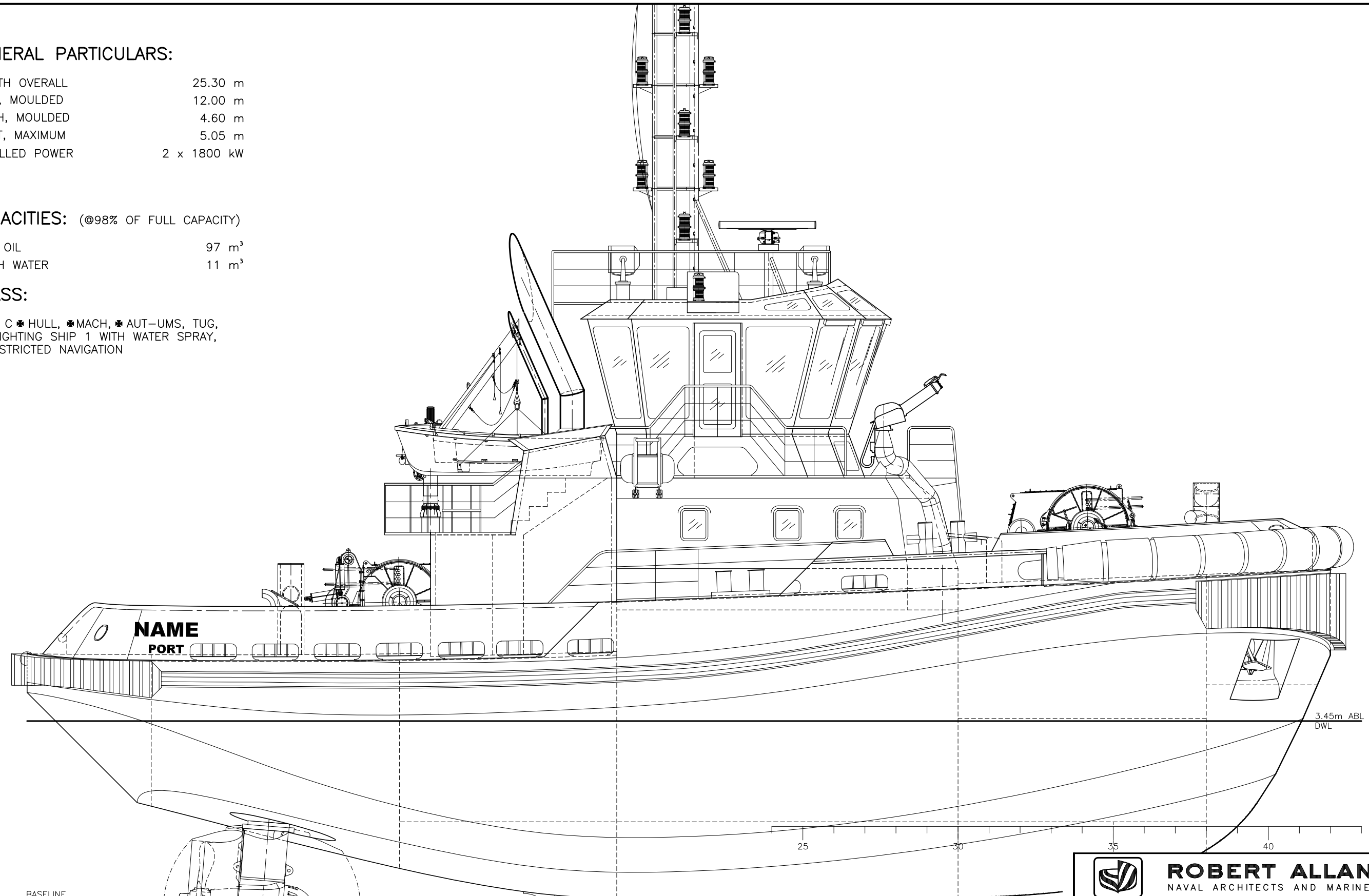
LENGTH OVERALL 25.30 m  
 BEAM, MOULDED 12.00 m  
 DEPTH, MOULDED 4.60 m  
 DRAFT, MAXIMUM 5.05 m  
 INSTALLED POWER 2 x 1800 kW

**CAPACITIES: (@98% OF FULL CAPACITY)**

FUEL OIL 97 m<sup>3</sup>  
 FRESH WATER 11 m<sup>3</sup>

**CLASS:**

RINA: C \* HULL, \* MACH, \* AUT-UMS, TUG,  
 FIREFIGHTING SHIP 1 WITH WATER SPRAY,  
 UNRESTRICTED NAVIGATION



BASELINE

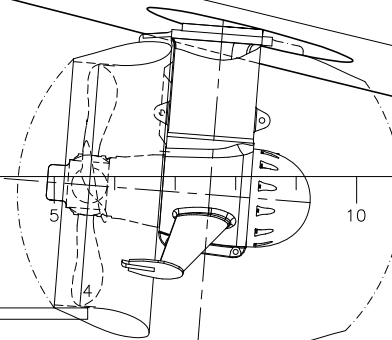
0

1

2

3

SCALE - METRES



OUTBOARD PROFILE

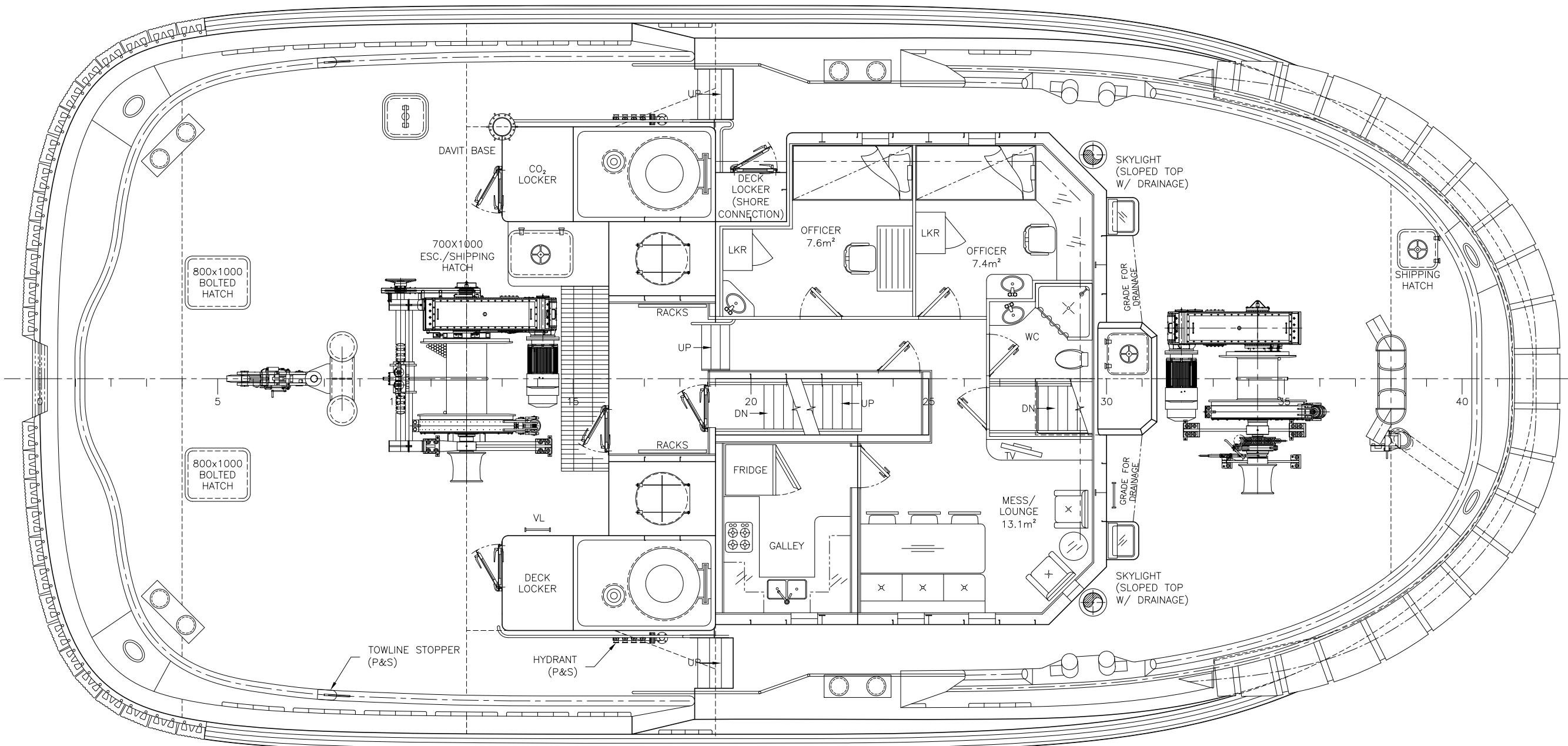
1800

**CONTRACT DESIGN**  
 ADJUST TO SUIT FINAL LOFTING AND CERTIFIED  
 VENDOR INFORMATION BEFORE CONSTRUCTION.

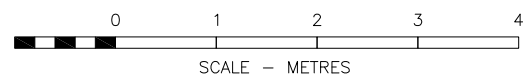


**ROBERT ALLAN LTD.**  
 NAVAL ARCHITECTS AND MARINE ENGINEERS


TITLE				GENERAL ARRANGEMENT	
SCALE	DATE	PLOT SIZE	SHEET		
1:75	JUL. 10/15	ANSI B	2 OF 5		
PROJECT No.	DRAWING No.		REV.		
214-042A	30000		1		

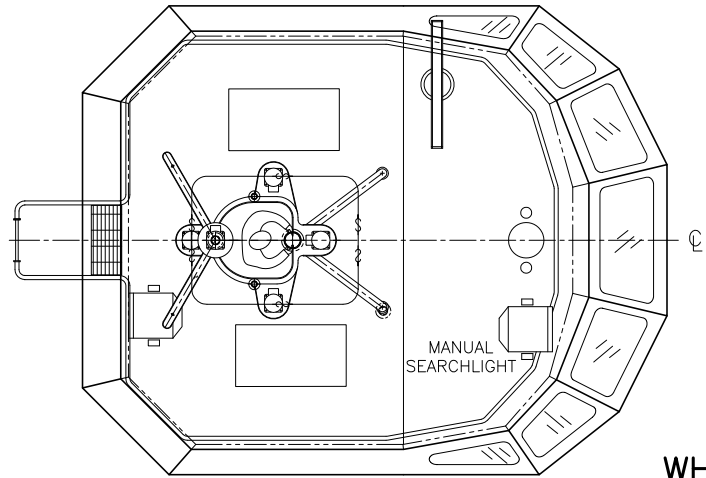
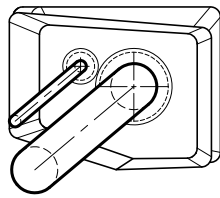


MAIN DECK PLAN

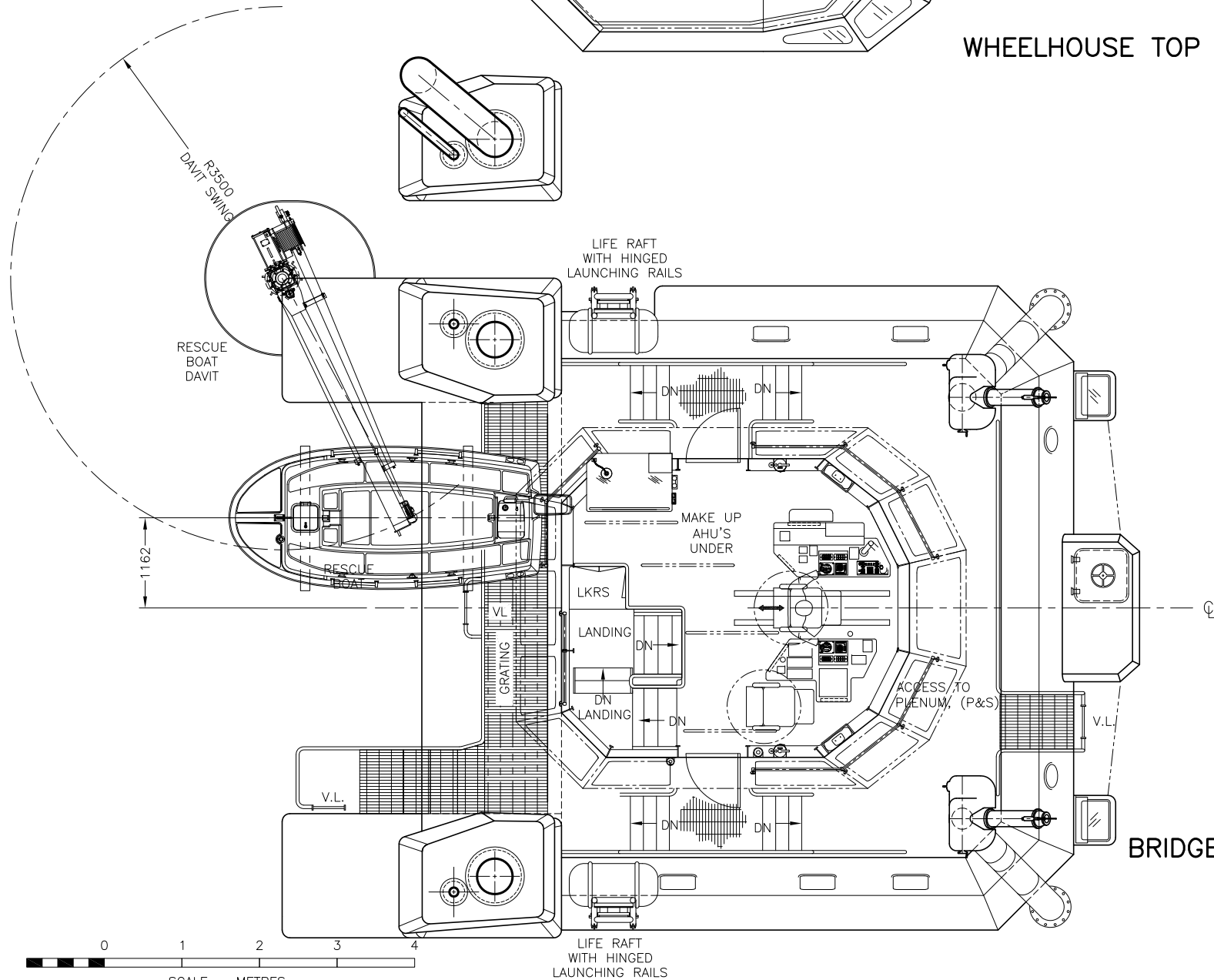
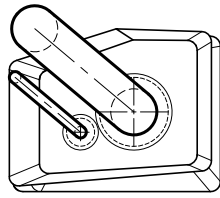


**CONTRACT DESIGN**  
 ADJUST TO SUIT FINAL LOFTING AND CERTIFIED  
 VENDOR INFORMATION BEFORE CONSTRUCTION.

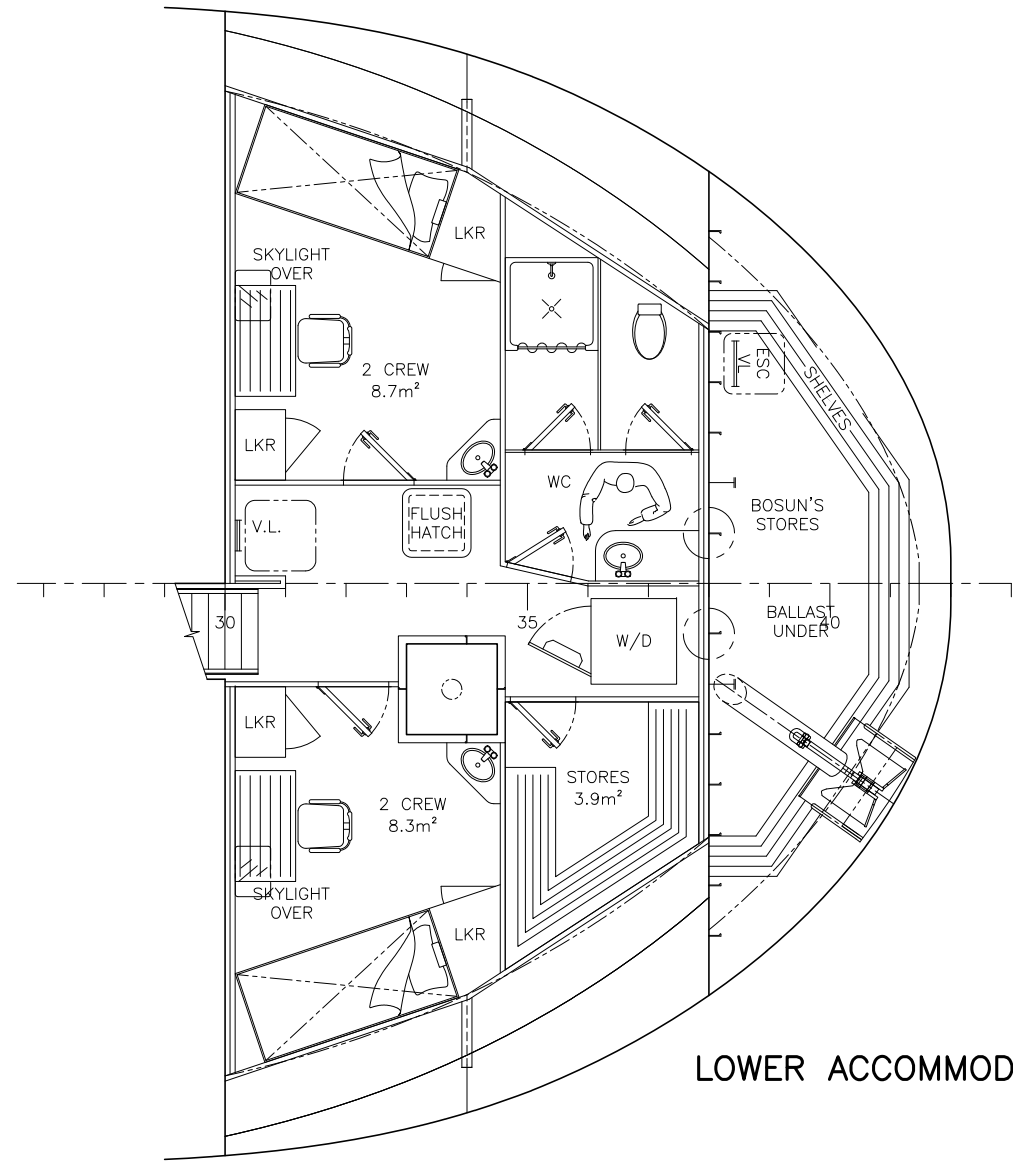
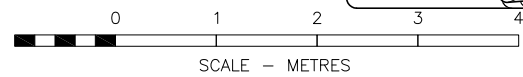
 <b>ROBERT ALLAN LTD.</b> NAVAL ARCHITECTS AND MARINE ENGINEERS			
TITLE			
<b>GENERAL ARRANGEMENT</b>			
SCALE	DATE	PLOT SIZE	SHEET
1:75	JUL. 10/15	ANSI B	3 OF 5
PROJECT No.	DRAWING No.	REV.	
214-042A	30000	1	



WHEELHOUSE TOP




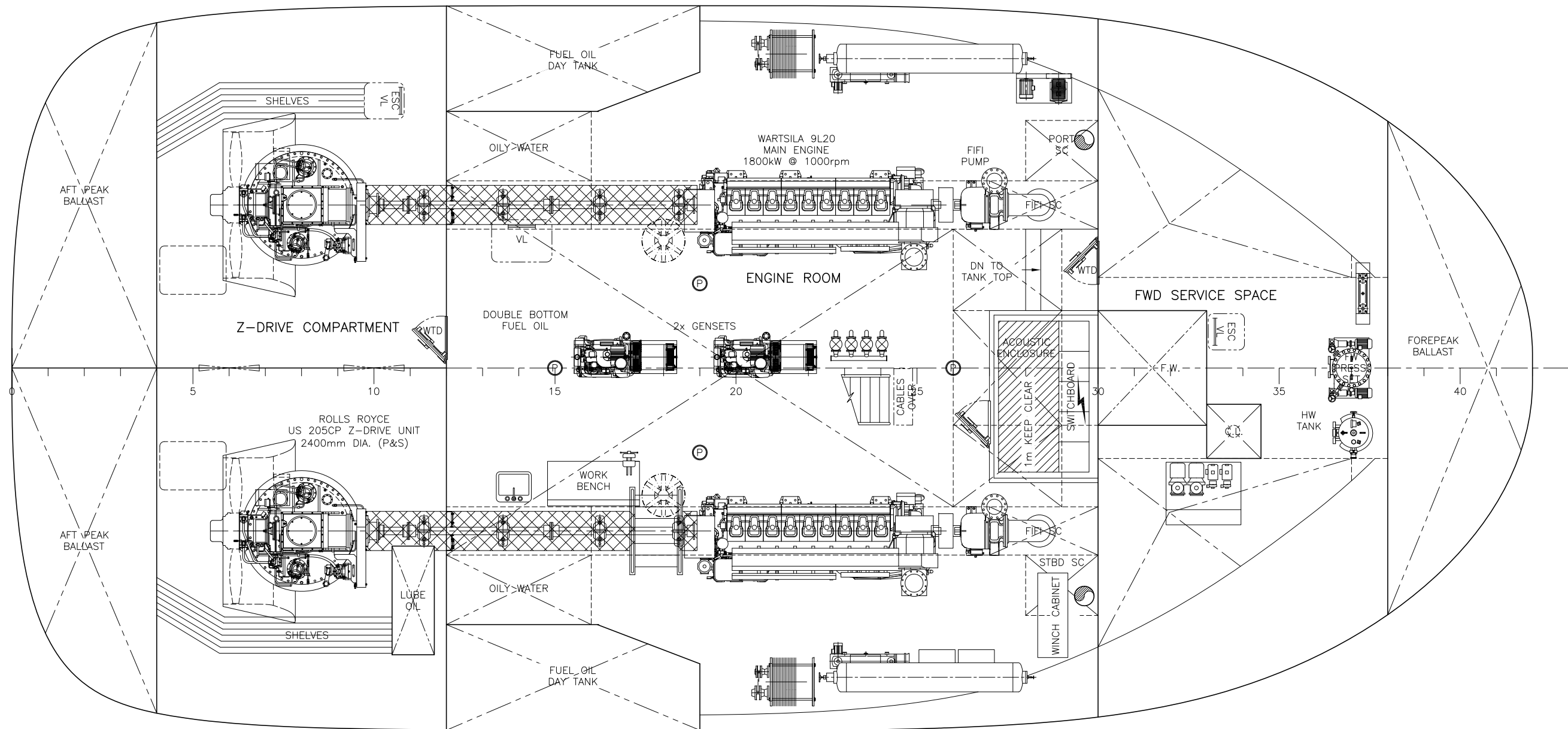
BRIDGE DECK



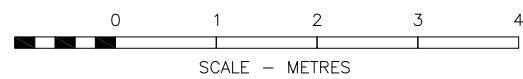
LOWER ACCOMMODATIONS

**CONTRACT DESIGN**  
 ADJUST TO SUIT FINAL LOFTING AND CERTIFIED  
 VENDOR INFORMATION BEFORE CONSTRUCTION.


 <b>ROBERT ALLAN LTD.</b> NAVAL ARCHITECTS AND MARINE ENGINEERS		TITLE		
		GENERAL ARRANGEMENT		
SCALE	DATE	PLOT SIZE	SHEET	
1:75	JUL. 10/15	ANSI B	4 OF 5	
PROJECT No.	DRAWING No.	REV.		
214-042A	30000	1		



HOLD PLAN



**CONTRACT DESIGN**  
 ADJUST TO SUIT FINAL LOFTING AND CERTIFIED  
 VENDOR INFORMATION BEFORE CONSTRUCTION.

 <b>ROBERT ALLAN LTD.</b> NAVAL ARCHITECTS AND MARINE ENGINEERS			
TITLE			
GENERAL ARRANGEMENT			
SCALE	DATE	PLOT SIZE	SHEET
1:75	JUL. 10/15	ANSI B	5 OF 5
PROJECT No.	DRAWING No.	REV.	
214-042A	30000	1	